



What is new in Kettle 5?



What's new in Kettle 5 agenda

- Back-end
- Carte
- Design patterns
- Usability
- Future

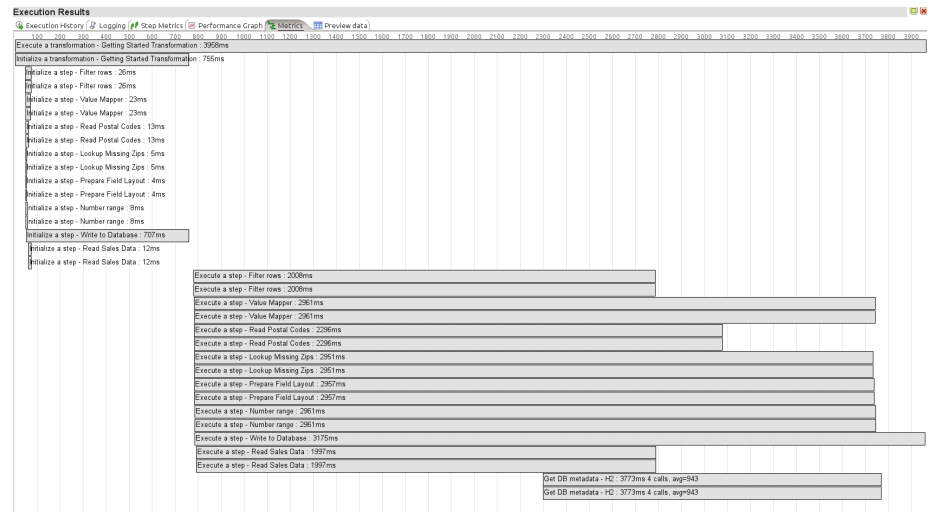


Kettle 5 - Backend technology

- Metrics

- Gathering of low level statistics
- Tied into the logging channels
- With full execution lineage

- Demo



Kettle 5 - Backend technology

- Pluggable data types
 - Allowing alternative values
 - GIS, Images, Sounds, ... w/ specific steps
 - Under construction!
 - Developer feedback welcome & critical
 - Demo

Kettle 5 - Carte

- Hooked up to a repository fun stuff happens...

```
<slave_config>

  <slaveserver>
    <name>slave4-8084</name>
    <hostname>localhost</hostname>
    <port>8084</port>
  </slaveserver>

  <repository>
    <name>FileRepository</name>
    <username></username>
    <password></password>
  </repository>

</slave_config>
```

Kettle 5 - Carte

- Execute job directly!
 - kettle/runJob?job=/TestJob&level=Detailed
 - Demo console wget

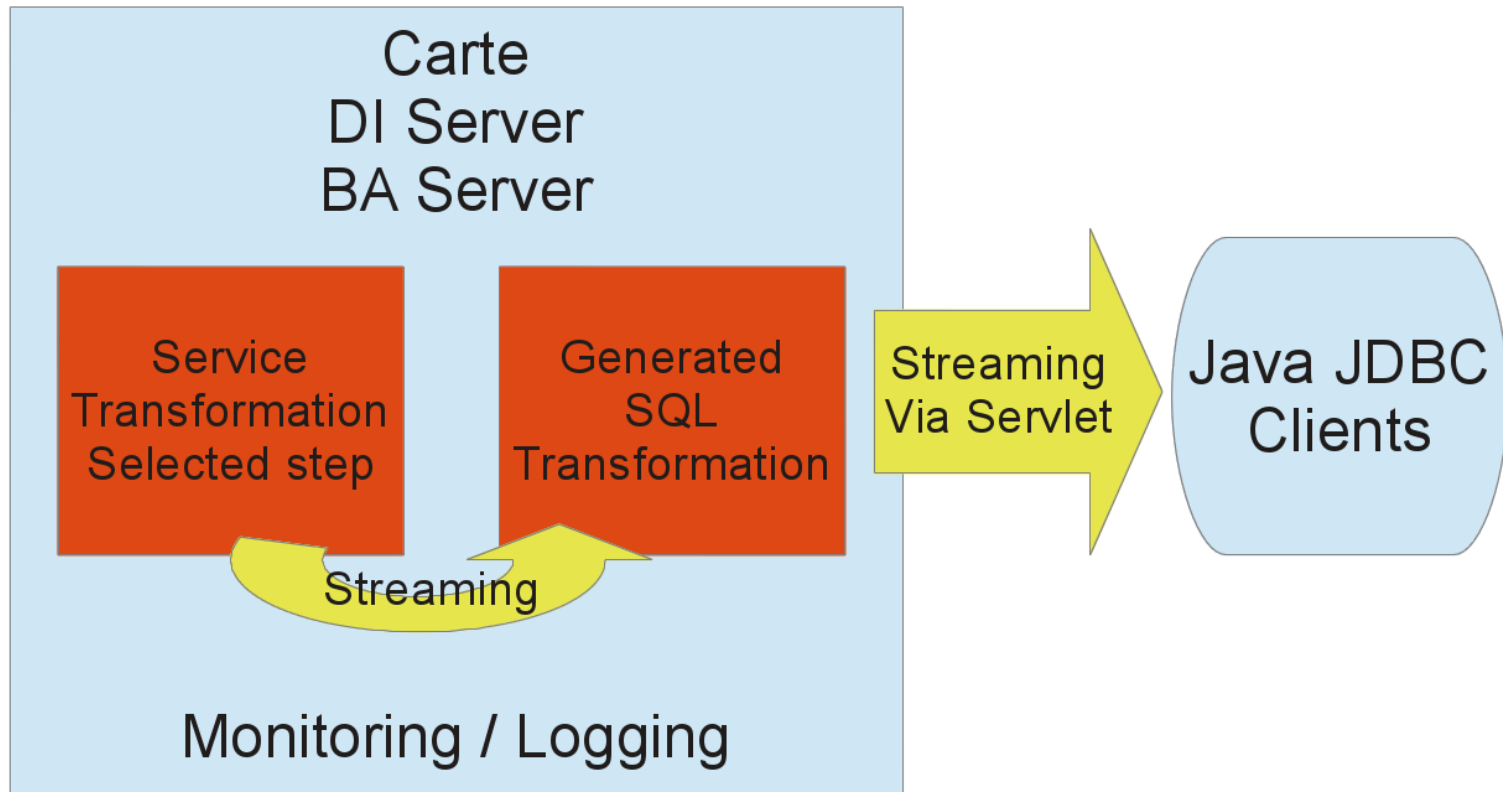
Kettle 5 - Carte

- Expose data services
 - kettle/listServices
 - Demo --> browser: <http://localhost:8084/kettle/listServices/>

- Hit carte with SQL through JDBC...
- **DEMO** --> browser: <http://localhost:8080> Pentaho BA Server 4.8.0 EE

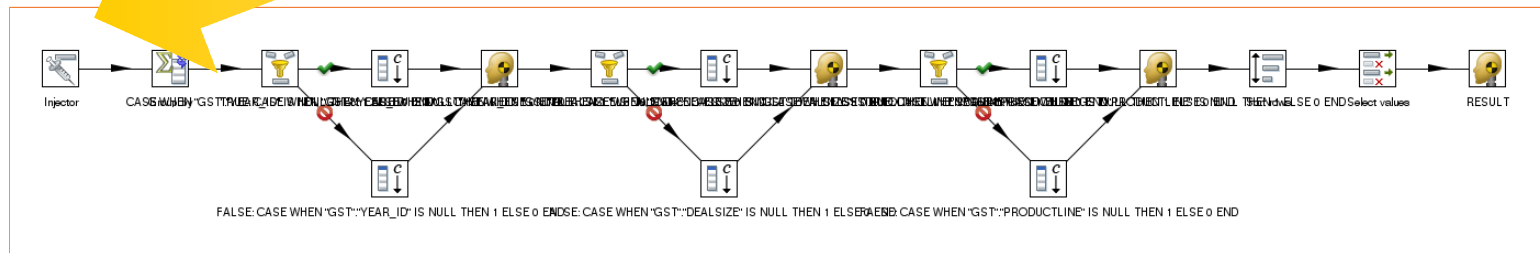
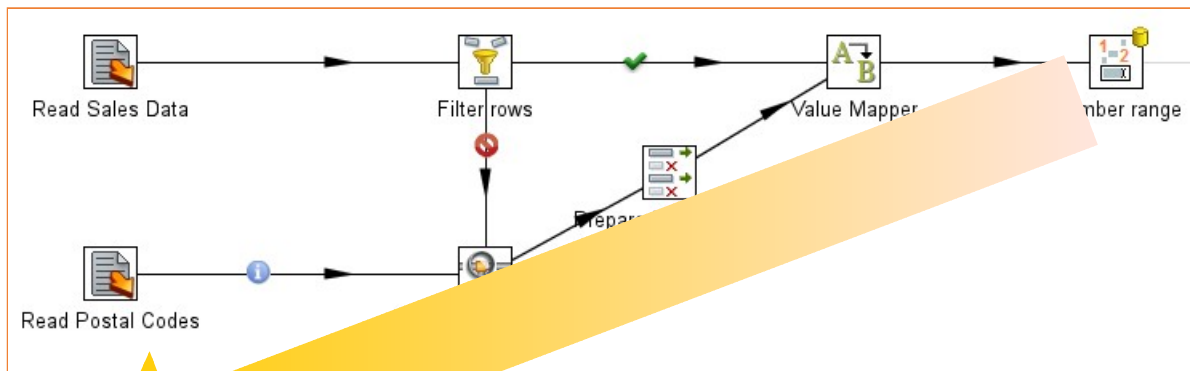
Kettle 5 - Carte

- Data services a.k.a data federation
- <http://wiki.pentaho.com/display/EAI/The+Thin+Kettle+JDBC+driver>



Kettle 5 - Carte

- Data services
 - Dynamically generated SQL



Kettle 5 - Carte

- Data services
 - Exposes SQL from Mondrian in Carte log
 - DEMO: Browser <http://localhost:8084/>

Kettle 5 - Carte

- Carte Plugins (build your own services)
- REST Services
 - <http://localhost:8084/api/carte/jobs>
 - <http://localhost:8084/api/carte/transformations>
 - [http://localhost:8084/api/carte/trans/log/ <id>](http://localhost:8084/api/carte/trans/log/<id>)
 - ..
 - **DEMO:** Show in browser

Kettle 5 - Design patterns

- Restartability
 - Database transactions across Jobs & Transformations
 - <http://wiki.pentaho.com/display/EAI/Database+transactions+in+jobs+and+transformations>
 - Job checkpoints and restartability
 - <http://wiki.pentaho.com/display/EAI/Job+checkpoints+and+restartability>
 - Demo: show where to find the goodies in Spoon

Kettle 5 - Design patterns

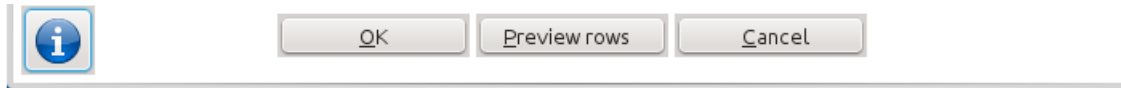
- Looping over data, files, ...
 - Sub-jobs in transformations!
 - Job Executor
 - Demo: show in Spoon: Monitor Servers transformation

Kettle 5 - Design patterns

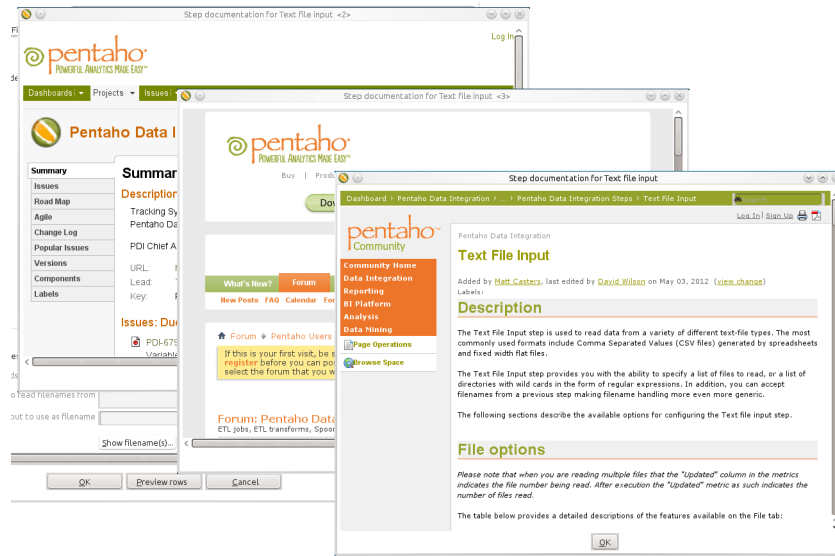
- Load balancing
 - For transformations
 - Data load monitoring of output buffer
 - **Demo:** show in spoon

Kettle 5 - Usability

- Help buttons on steps and job entries



- Floating doc window, non modal
- DEMO: show Text File Input docs



Kettle 5 - Usability

- Continuous preview mode
- Work in progress
- **DANGEROUS DEMO:** Spoon open “CSV Input Example”
- + Step select prev of Getting Started Transformation

Kettle 5 - Future

- Wrap up migration to Apache Ivy (nearly done)
 - **DEMO** : show in Eclipse
- Implement metadata store back-end
 - Top priority for the coming weeks
 - MongoDB database connections, Sessions manager, config mgt, data lineage, ...
- Migrate PDI to Github when time permits
- Community Surprises.

Kettle 5 - QA

- Thanks!
- Any questions?